

## Mantel Styles

These non-combustible mantels are available in a 8" X 8" with lengths of 60", 72", and also custom lengths. Comes with a pre-drilled wall mounting bracket.



### Large Rough Cut Mantel



#### Redwood

The Redwood beam has a smoky topaz base, with a earth brown stain and accented with a black stain to make the texture in the wood stand out.



#### Chestnut



The Chestnut beam starts with a natural wood color base, with dark brown highlights finished with an earth brown stain.



#### Smoky Oak

The Smoky Oak beam has a light grey base with a faint dark brown highlights, finished with a warm grey stain.



#### Charred Barnwood



The Charred Barn wood beam has a dark brown base, finished with a black stain.

Color variations are inherent in all products. The product colors you see in this brochure are as accurate as current photography and printing techniques allow. We recommend you look at product samples before selecting a color.

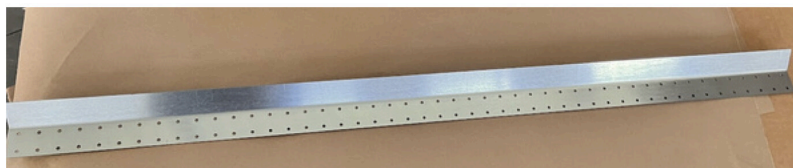
## Mantel Styles

These non-combustible mantels are available in a 8" X 8" with lengths of 60", 72", and also custom lengths. 60" mantel weighs 100 lbs and the 72" mantel weighs 120 lbs.



## Large Rough Cut Mantel

### Wall Mounting Bracket



Our wall mounting bracket is galvanized steel plate with predrilled holes to make for easy mounting. We also include the screws you will need for mounting.

### Easy Mounting



Our wall mounting system is one of the easiest in the industry. No drilling into the mantel, just hang the mounting bracket and place the beam on the bracket and you're done.

Color variations are inherent in all products. The product colors you see in this brochure are as accurate as current photography and printing techniques allow. We recommend you look at product samples before selecting a color.